

Social care and the value of university trained four years program of care worker in Japan

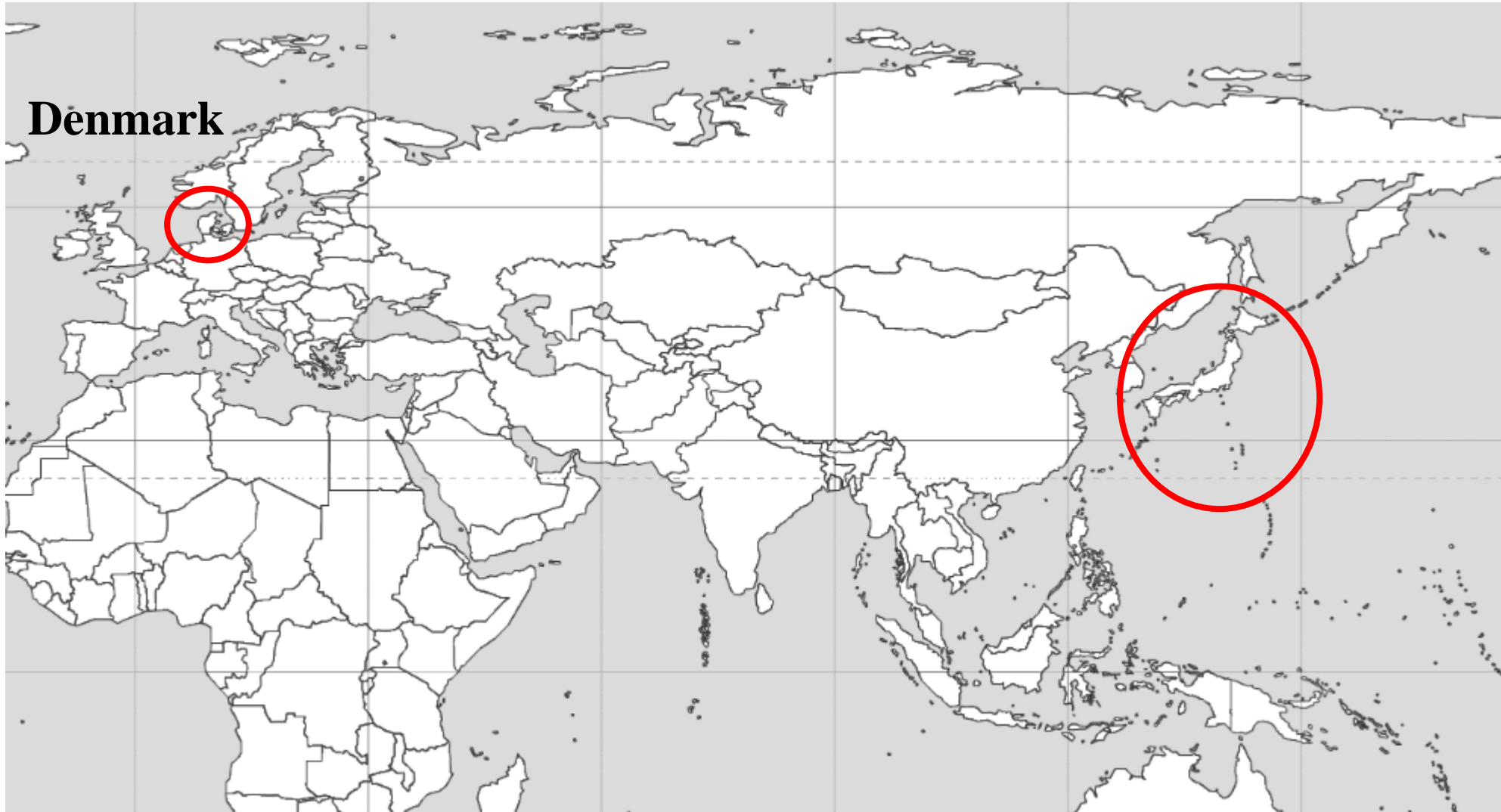


Hiromi Watanabe

Professor Doctor of social Welfare
R.N. Certified Care Worker
Faculty of Design for Welfare Society,
Toyo University, Japan



E-mail:
hwatanabe@toyo.jp



Denmark

Japan

Demographics in Japan / Denmark

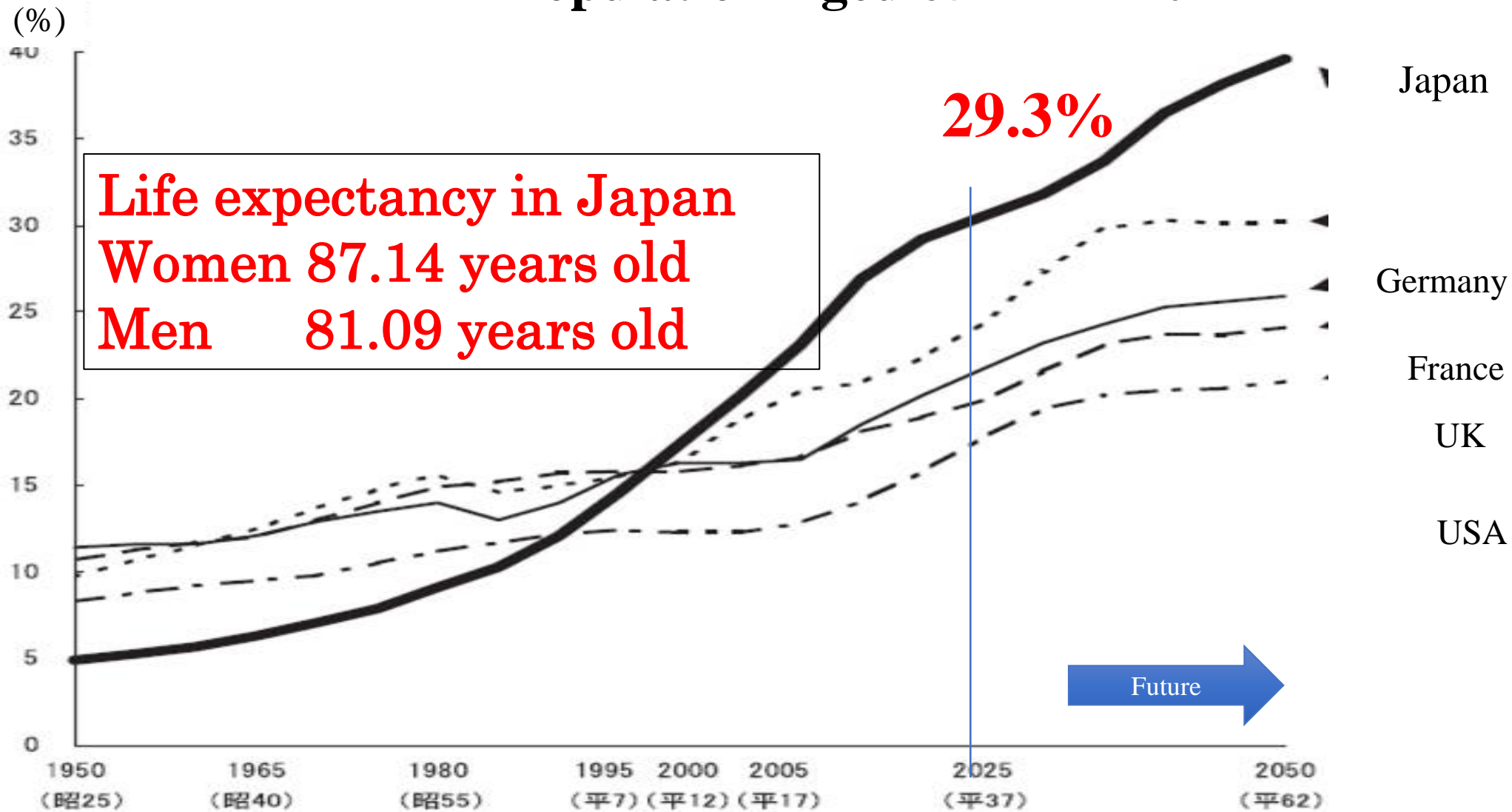
	Japan (Aug 2023)	Denmark (2023)
Total population	124 million	5.9million
Elderly population (Aged 65+)	36million	1.2million
Percentage of elderly	29.1%	20.6%
Centenarian(Aged 100+)	92,139	1174

Source: Statistics Bureau of Japan (2023) <https://www.stat.go.jp/data/topics/topi1321.htm>

Statistics Denmark (2023)<https://www.statbank.dk/FOLK1A>

Population at the first day of the quarter [Cited 11 Oct 2023]

Population Aged 65+ in 2024



Source: Statistics Bureau of Japan (2024) <https://www.stat.go.jp/data/topics/topi1420.html>

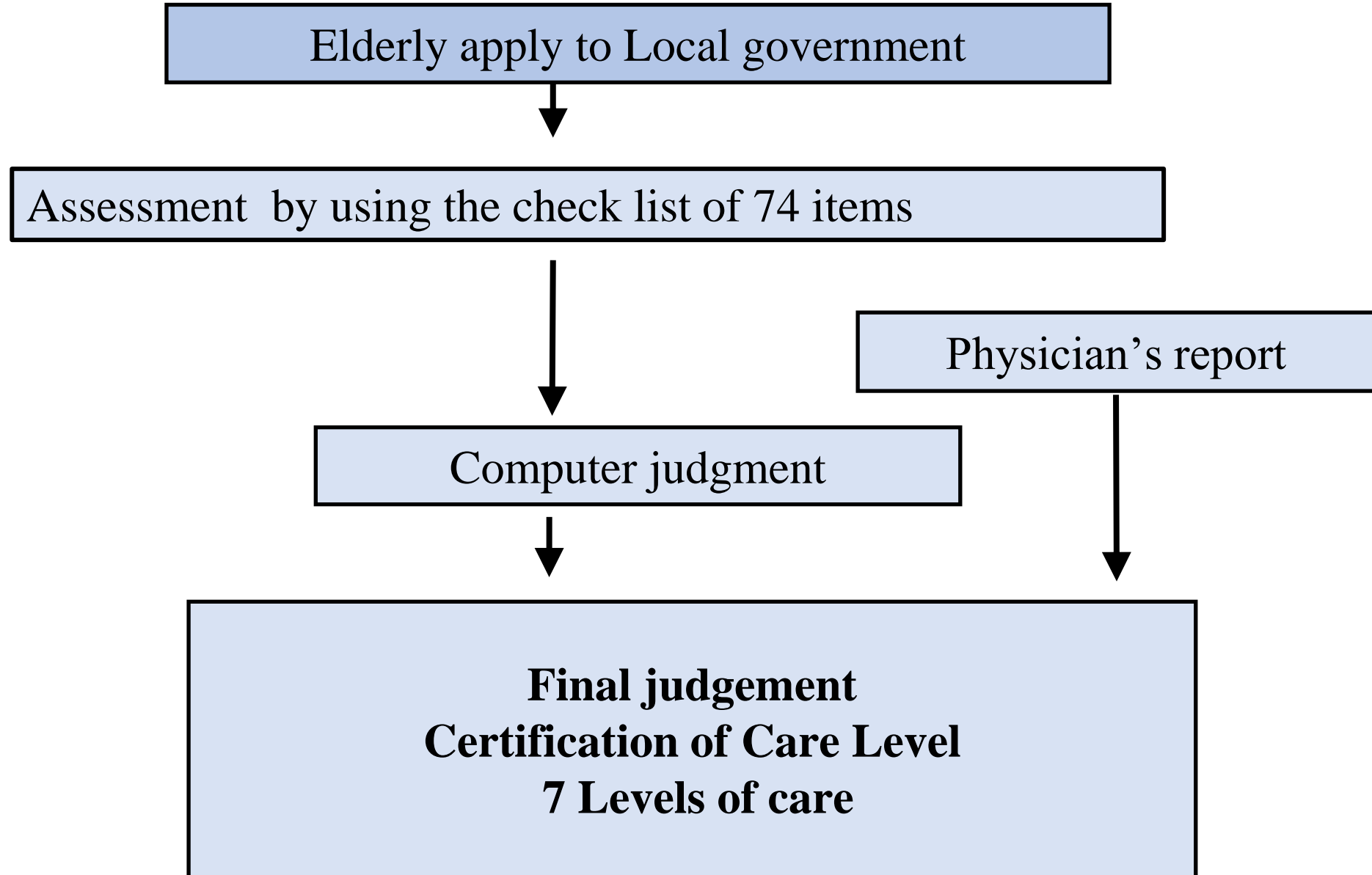
Ministry of Health, Labour and Welfare (2024) [chrome-](chrome-extension://efaidnbnmnibpcajpcglclefindmkaj/https://www.mhlw.go.jp/toukei/saikin/hw/life/life23/dl/life23-15.pdf)

[extension://efaidnbnmnibpcajpcglclefindmkaj/https://www.mhlw.go.jp/toukei/saikin/hw/life/life23/dl/life23-15.pdf](https://www.mhlw.go.jp/toukei/saikin/hw/life/life23/dl/life23-15.pdf)

	Japan	Denmark
Law	Long-term care insurance Law Established in April 2000	Social Service Act
Eligible	Covers elderly people over 65 (in some cases 40-64 years)	Covers people of all ages (including people with disabilities)
Funded	Public insurance premiums 50% + Tax 50%	Tax 100%
Local Government	Insure Do not provide services directly	Local government have accountability to deliver 24-hour home help and home nursing.
Care provider	Private provider (Based on a Business market)	Public provider +private provider (Free choice system)
Payment	User's co-payment -10% of the service cost, insurance covers 90% (Wealthy user's copayment -30% or 20%)	Free of Charge

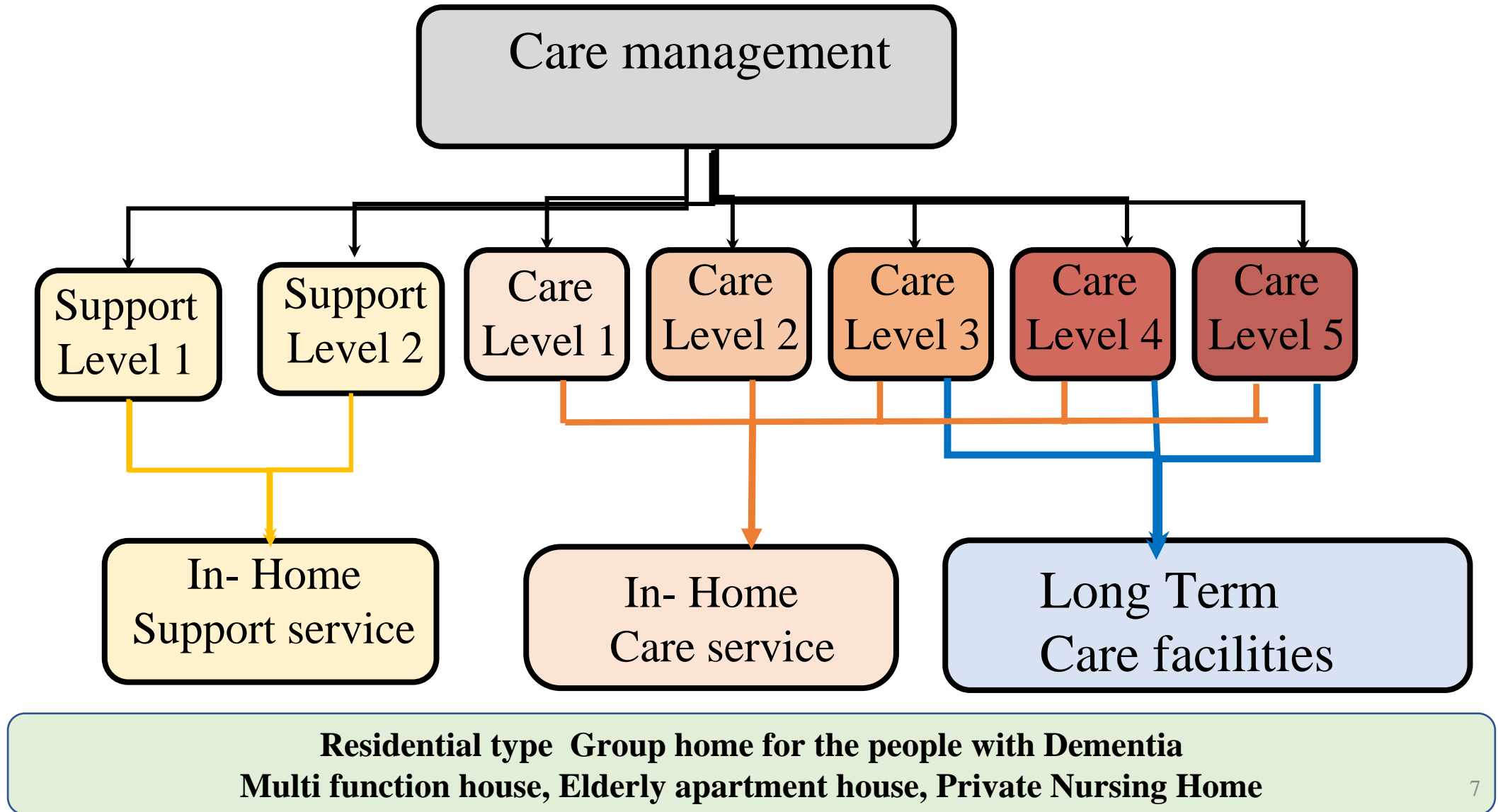
*Source: Japan: Ministry of Health, Labor and Welfare. 2018. Long-Term Care Insurance System.
Denmark :Et bedre liv 2013 in Aarhus in Denmark*

Flow of LTCI care Certification



7 levels of care

Nursing homes admit the people who have care level 3, 4, and 5 certification.



Medical Health Insurance

Covers all persons living in Japan



★No Registration of GP(General practitioner), family doctor or primary doctor

★Free Choice Medical Doctor, Clinic, Hospital

Medical Health Insurance system in Japan

**Free choice
Clinic/Hospital**

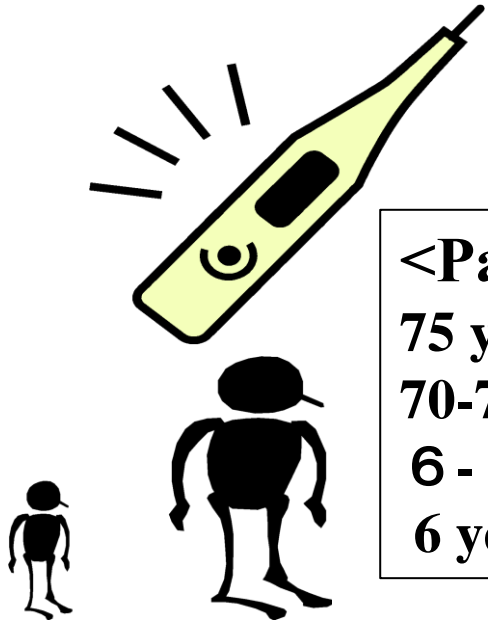
<Patient's copayment>

75 years over : **10% ~30%**

70-74 years : **20%~30%**

6 - 69 years : **30%**

6 years under : **20%**

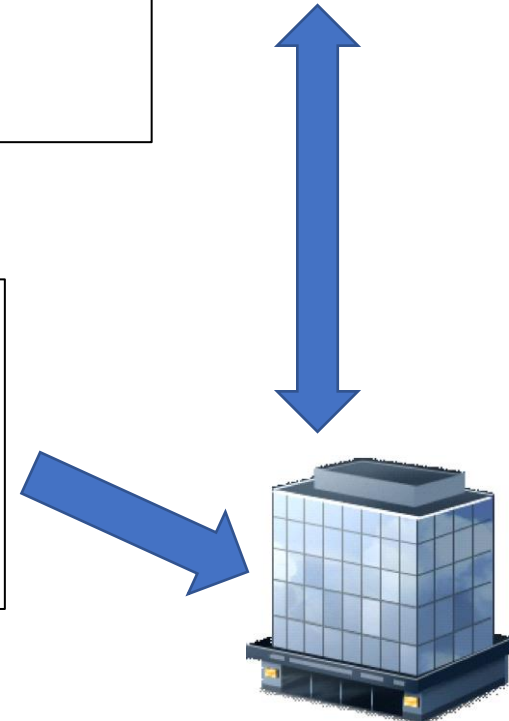


<Financing of Medical Insurance>

Insurance Premium by citizen

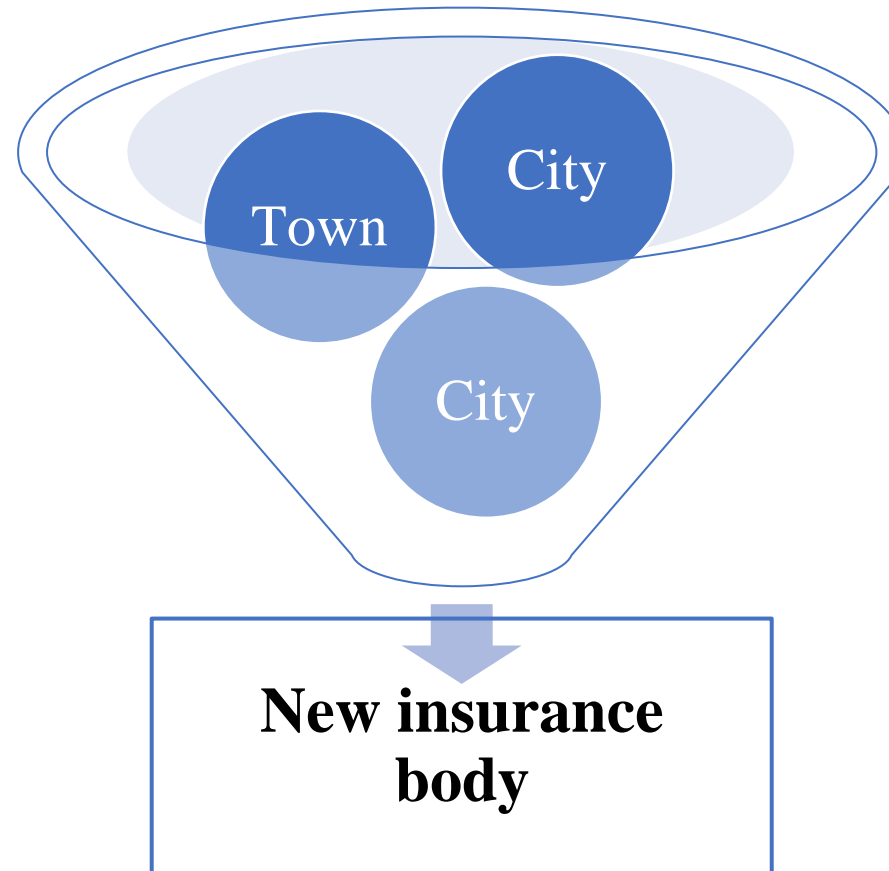
Employer

Government subsidy



Medical Health Insurance for the Aged 75 +

In April 2008, ‘Medical Health Insurance for the Aged 75+’ started.



LTCI Insurance Service

In Home Care



Out of home type service

Day service

Multi function house



Lunch
Activity
Bath
Rehabilitation

Home visiting type service

- Home Help service/ 24-hour routine home visits
- Home visit Nursing
- Home visit Rehabilitation
- Home visit Bathing
- Home Renovation
- Technical Aids

Residential type service

Group Home for the people with Dementia
Multi function house

Long- Term Care Facilities

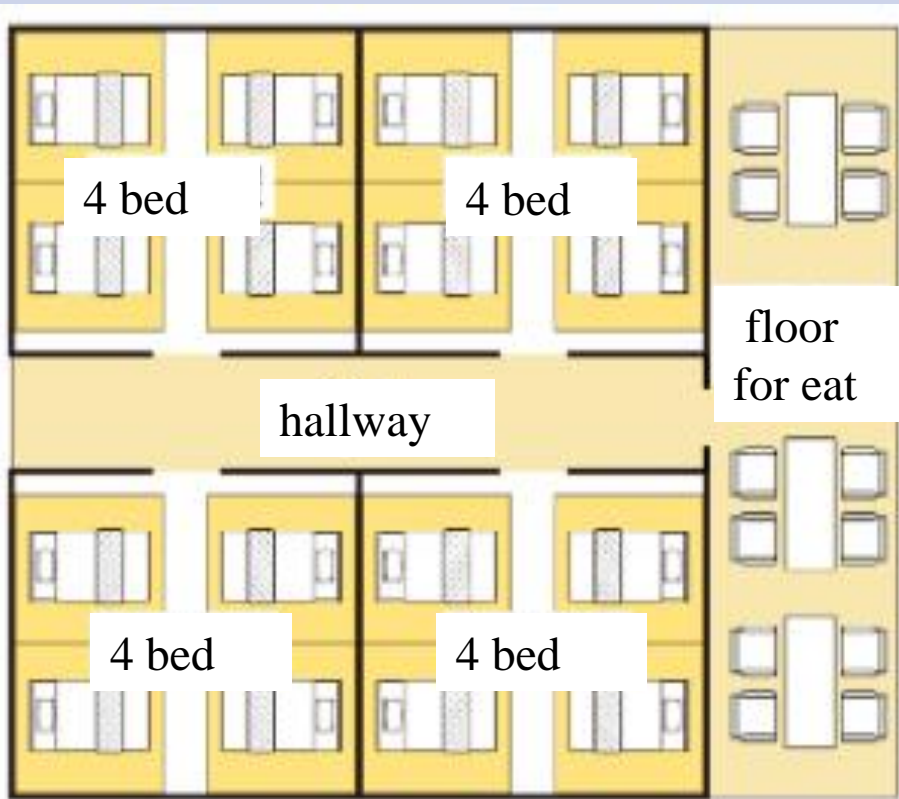


Nursing Home
Health care facilities
Medical care facilities (sanitorium ward)

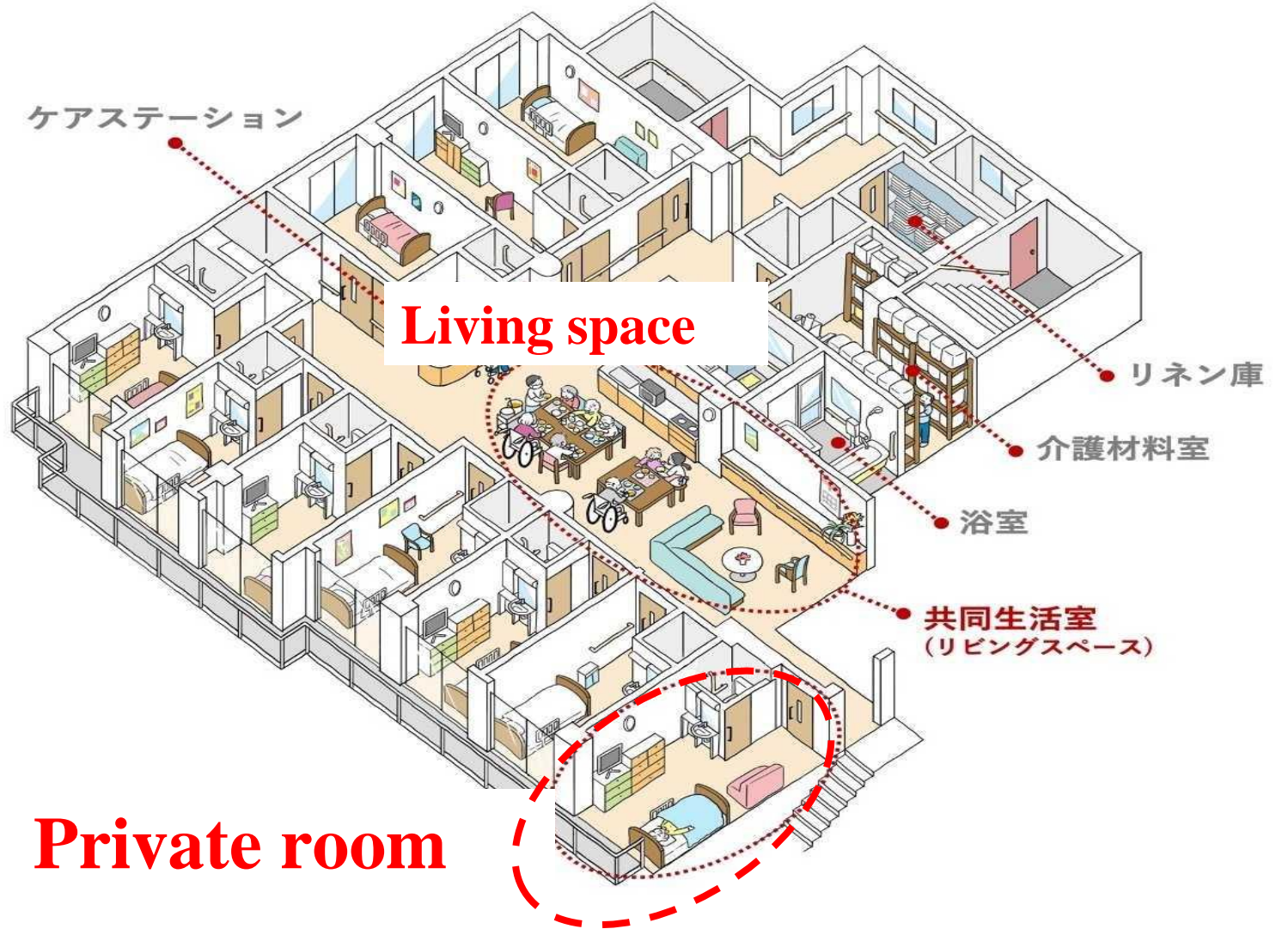
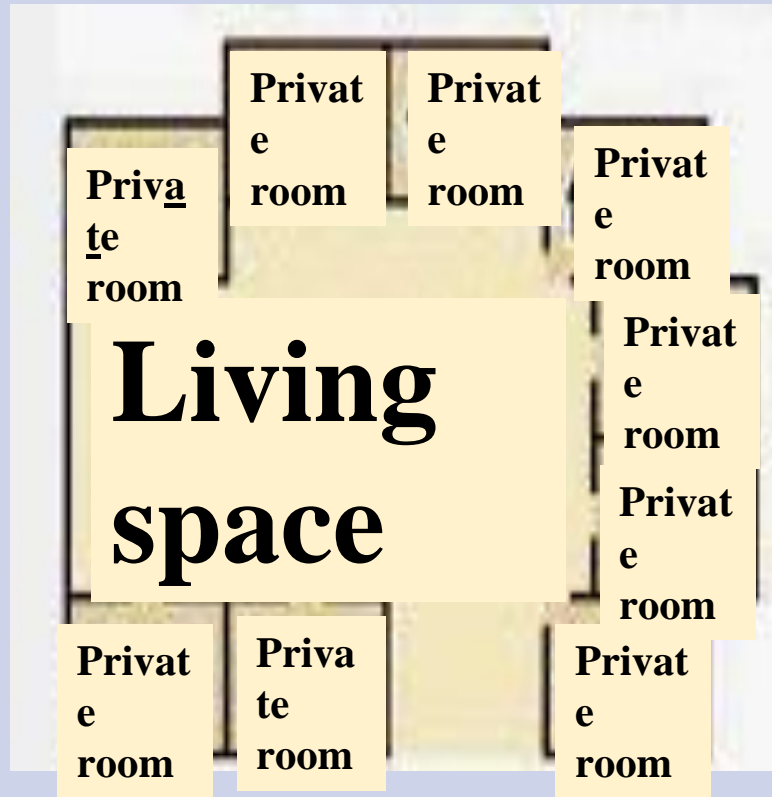
Elderly apartment
Private Nursing
Home

General type Nursing home (started in 1963)

4 person share one bed room.



New Unit type Nursing home (started in 2002)



General type Nursing Home: Kaminakazato Tsutsuji-so



Tutsuji-so is a pioneer of No Physical restraint.

They provide many kinds of wheelchairs for each elderly.



The nurses and care staff cooperate. Their care quality is good.

New Unit Type Nursing Home: Alicenomori kinoko minamiazabu



<https://kinoko-group.jp/institution/1050/>

Meals in Nursing homes

Japanese food is served in several small portions



http://kitajigyo.com/aged_service/shimizuzaka/home.html



<https://tokuyo-hikari.egao.or.jp/6700.html>



<https://narihira.camellia-kai.com/2022/11/11/%E3%80%90%E7%89%B9%E9%A4%8A%E3%83%BBss%E3%80%91%E5%87%BA%E5%BC%B5%E5%AF%BF%E5%8F%B8%E3%83%AC%E3%82%AF/>

https://www.facebook.com/story.php?story_fbid=1386438458478202&id=265490987239627&m_entstream_source=timeline&_rdr

Bathing in Nursing homes



<https://www.sakaimed.co.jp/>

Mobile Bathing Service for people who live at home



<http://green-town.seesaa.net/article/201151732.html>

Good practice at “Aoi Care”

Open care style with Elderly, families, staff and neighbors



<https://aoicare.co.jp/ns/>

Have you heard about these two types of care ?



“Maid-Servant Syndrome”

Reference: Lis Wagner (1994). Innovation in primary health care for elderly people in Denmark

“Person-Centered”

Reference: **World Health Organization**(2015) WHO global strategy on integrated people-centred health services.
WHO: What is people-centred care? <https://youtu.be/pj-AvTOdk2Q?si=II-tp4s08MuAetX5>

Two Types of Care

<u>Maidservant Syndrome Care</u>	<u>Person-Centered Care</u>
Task-centered.	Person / people-centered.
Care workers decide how to provide assistance.	People can control his/her own care.
People become passive.	People become active.
Decline in their daily living abilities. 	Promote self-care and Independence. 

A:
Feeding assistance,
Help with eating



B:
Listen to the person's voice carefully. Promote
self-eating as much as possible. Keep trying.



How to Transfer from Bed to Wheelchair

A **Risky! Back pain!**
lifts manually,
handling the weight

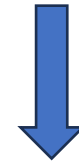


B

1. Use Technical Aids:
① Slide Board
② Wheelchair with Removable Armrests



2. Skill and Knowledge



Safety & Protecting back pain

Person-Centered Care

- Empowers and encourages the client.
- Promotes self-care.
- Acknowledges the client's abilities.
- Adjusts the environment and provides technical aids to support the client's self-care.

Which type of care is more professional?

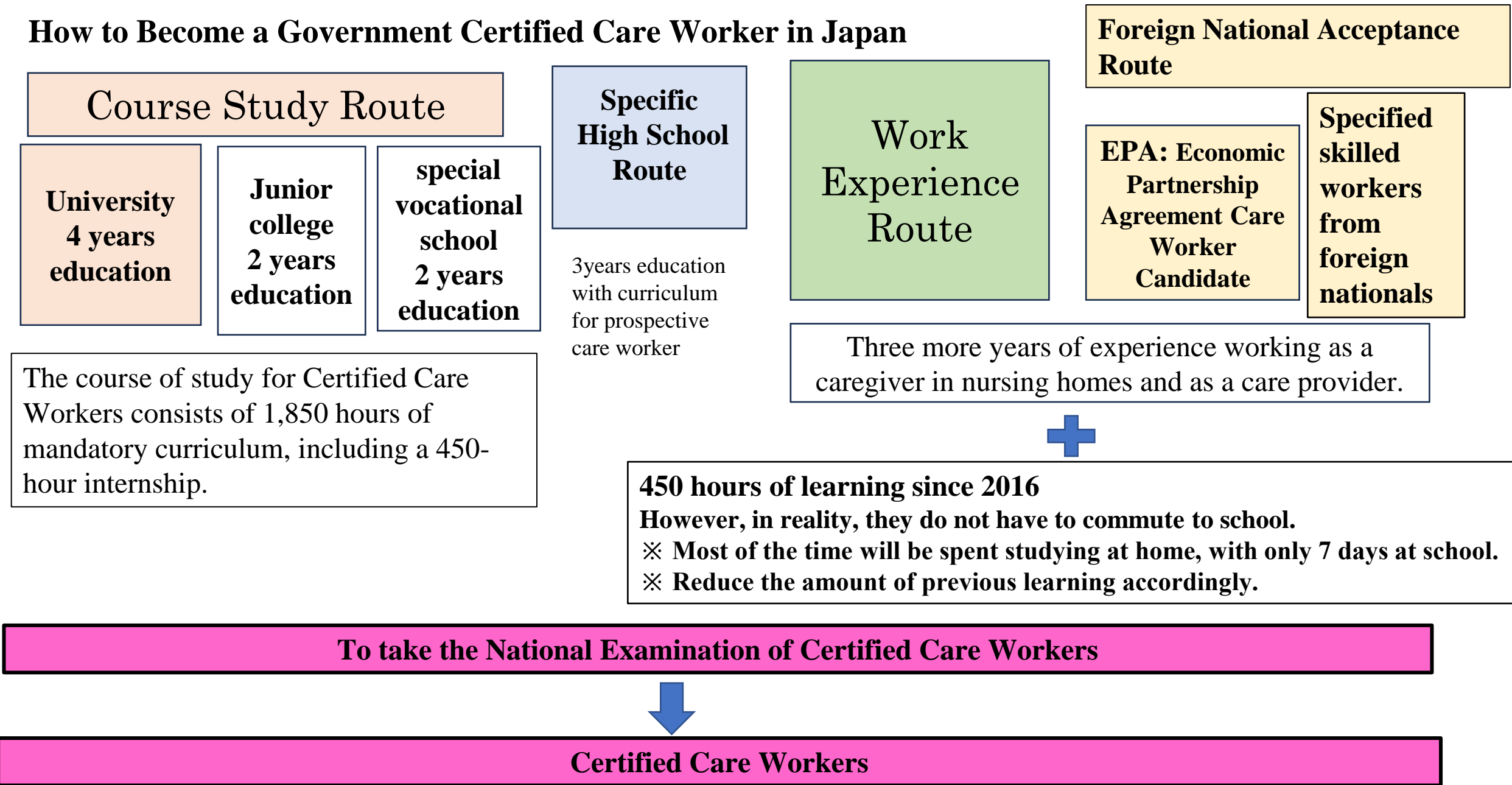
Maidservant Syndrome

★★★★★ Person-Centered Care

The advantages well-educated, a four-year university program to train and certify professional care workers.

Toyo University has a capacity of 40 students per year.

How to Become a Government Certified Care Worker in Japan

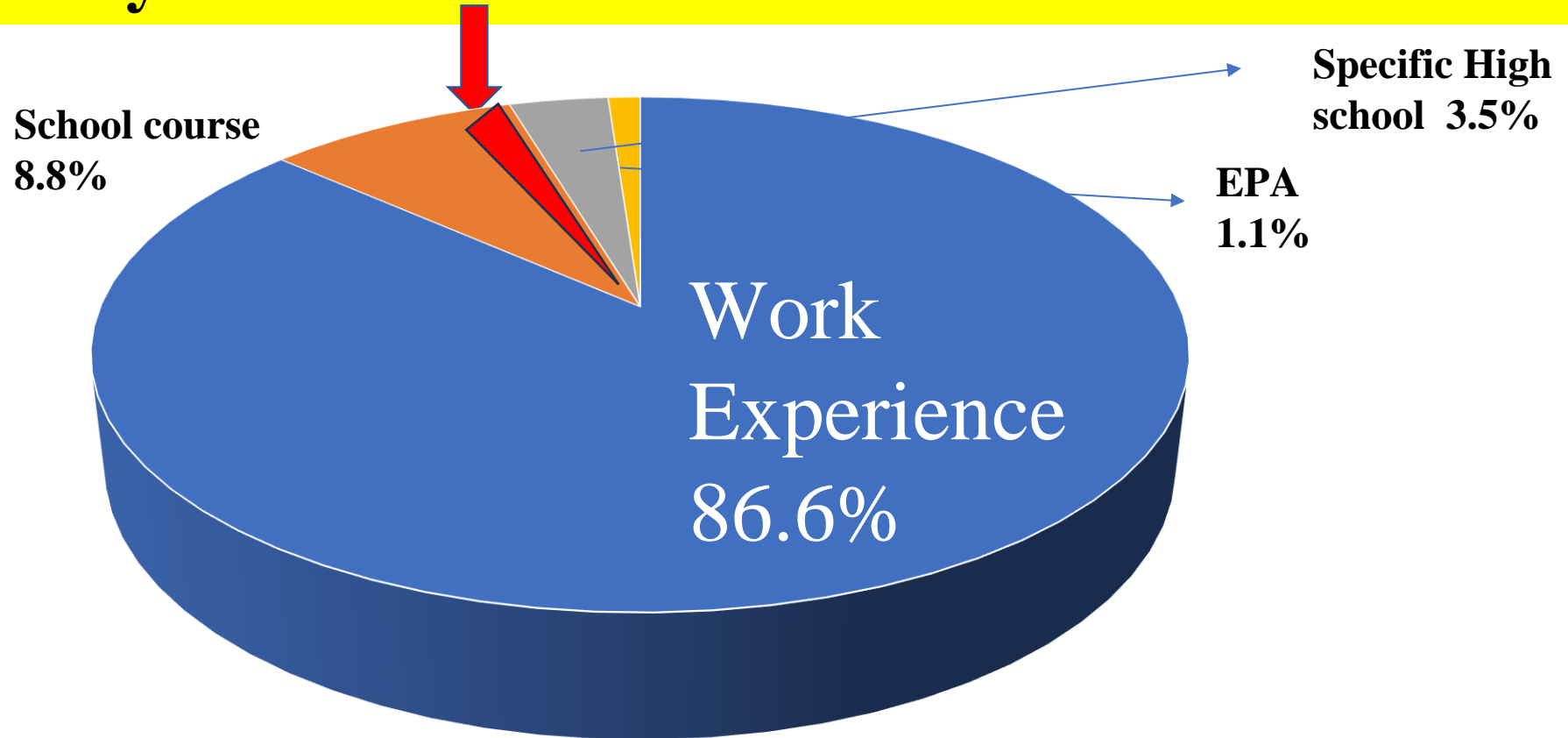


Results:

66,711

Newly certified care workers, March 2023

University-trained social care workers 684 1.0%

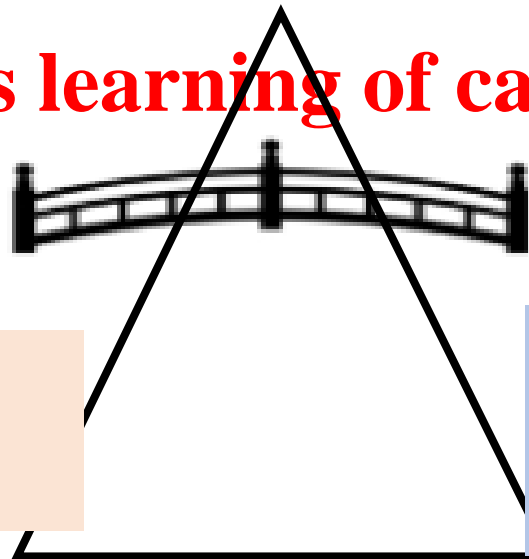


Advantages for University Students

In 2023, 53 universities in Japan offer certified care worker courses. These universities also provide certified social worker education. The advantages for university students include:

1. Bachelor's degree in social welfare studies.

4. **Simultaneous learning of care work and social work**



2. Diploma for
【Certified Care Workers】

3. Diploma for
【Certified Social Workers】

Key Takeaways:

- ◆ Task-centered care should be changed to Integrated Person-centered care.
- ◆ The value of 1% of university-trained social care workers in Japan.
- ◆ Well-educated professional care workers will be a key pillar in a diverse society.

Thank you for your attention!



Hiromi Watanabe

Toyo University, Japan

E-mail: hwatanabe@toyo.jp

